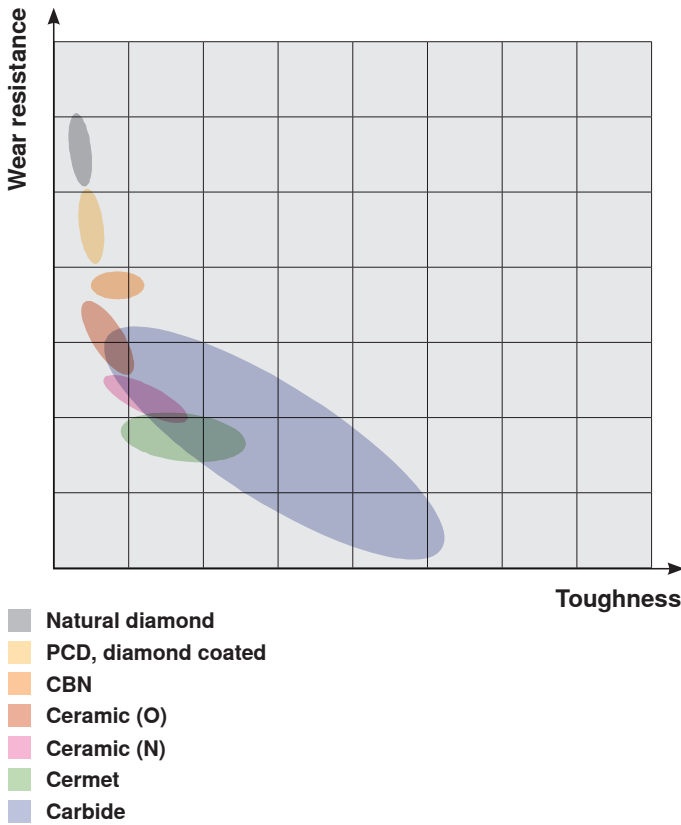


GRADES

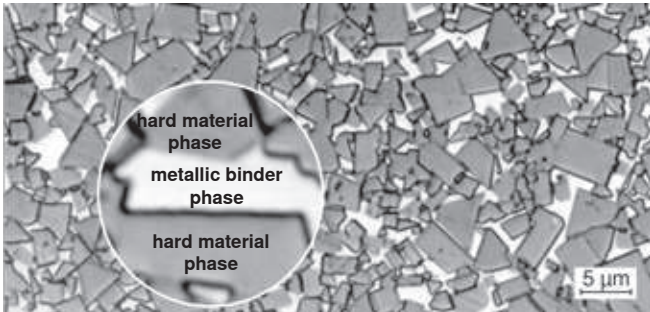
TAILOR-MADE CARBIDES FOR STONE WORKING



Carbide is a hard material with mechanical properties that can be adjusted within a very wide range, given its composition and microstructure. The hardness and toughness range of the CERATIZIT grades includes everything from wear-resistant tool steel to super-hard ceramic materials.

Criteria relevant for application

- ▲ Wear resistance, hardness
- ▲ Compressive strength
- ▲ Impact strength
- ▲ Transverse rupture strength
- ▲ Tribological properties
- ▲ Specific weight
- ▲ Magnetic properties
- ▲ Modulus of elasticity, rigidity
- ▲ Thermal properties
- ▲ Corrosion resistance, resistance to oxidation
- ▲ Toughness



Micrograph of WC-Co carbide

The hard material provides the necessary

- ▲ Hardness
- ▲ Wear resistance

The metallic binder provides

- ▲ Toughness