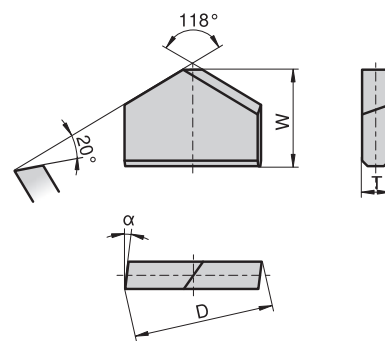
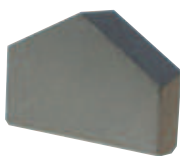
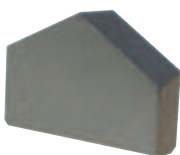


Masonry drill tips – ANSI
 Schlagbohrerplatten – ANSI
 Plaquettes pour mèche maçonnerie – ANSI
 Placchette per punte a forare – ANSI
 Puntas de brocas para hormigon – ANSI



Type, description	Ø [inch]	D [inch]	Tol. [inch]	W [inch]	Tol. [inch]	T [inch]	Tol. [inch]	α
28500..	1/8"	0.140	-0.006	0.138	+0.010	0.035	-0.003	9°
	5/32"	0.171	-0.006	0.158	+0.010	0.035	-0.003	9°
	3/16"	0.206	-0.008	0.177	+0.010	0.045	-0.003	8°
	1/4"	0.268	-0.008	0.197	+0.010	0.060	-0.003	8°
	5/16"	0.335	-0.008	0.236	+0.010	0.060	-0.003	7°
	3/8"	0.398	-0.008	0.276	+0.010	0.078	-0.003	7°
	1/2"	0.530	-0.010	0.335	+0.015	0.091	-0.004	7°
	5/8"	0.660	-0.010	0.394	+0.015	0.091	-0.004	7°
	3/4"	0.787	-0.012	0.473	+0.015	0.091	-0.004	7°
	7/8"	0.917	-0.012	0.532	+0.015	0.091	-0.004	7°
	1"	1.042	-0.012	0.575	+0.015	0.122	-0.005	7°
	1 1/8"	1.175	-0.018	0.630	+0.020	0.122	-0.008	7°
	1 1/4"	1.300	-0.018	0.650	+0.020	0.122	-0.008	7°
	1 3/8"	1.425	-0.018	0.689	+0.020	0.122	-0.008	7°
1 1/2"	1.550	-0.018	0.709	+0.020	0.122	-0.008	7°	



Type, description	Ø [inch]	D [mm]	Tol. [mm]	W [mm]	Tol. [mm]	T [mm]	Tol. [mm]	α
28500..	1/8"	3.55	-0.15	3.5	+0.25	0.89	-0.07	9°
	5/32"	4.34	-0.15	4.0	+0.25	0.89	-0.07	9°
	3/16"	5.23	-0.20	4.5	+0.25	1.15	-0.07	8°
	1/4"	6.80	-0.20	5.0	+0.25	1.52	-0.07	8°
	5/16"	8.50	-0.20	6.0	+0.25	1.52	-0.07	7°
	3/8"	10.10	-0.20	7.0	+0.25	1.98	-0.07	7°
	1/2"	13.46	-0.25	8.5	+0.38	2.31	-0.10	7°
	5/8"	16.76	-0.25	10.0	+0.38	2.31	-0.10	7°
	3/4"	19.98	-0.30	12.0	+0.38	2.31	-0.10	7°
	7/8"	23.29	-0.30	13.5	+0.38	2.31	-0.10	7°
	1"	26.46	-0.30	14.6	+0.38	3.09	-0.12	7°
	1 1/8"	29.84	-0.45	16.0	+0.50	3.09	-0.20	7°
	1 1/4"	33.02	-0.45	16.5	+0.50	3.09	-0.20	7°
	1 3/8"	36.19	-0.45	17.5	+0.50	3.09	-0.20	7°
1 1/2"	39.37	-0.45	18.0	+0.50	3.09	-0.20	7°	

Codification code example: 28500- 1/8" CTM17-BC