

Turning

Extended product range

A6



Negative inserts

-M50



- ▲ Medium machining
- ▲ Unstable machining situations
- ▲ Low cutting forces
- ▲ Spheroidal cast iron

-M70



- ▲ Light to medium-rough machining
- ▲ Interrupted cut
- ▲ Cast skin and forging skin
- ▲ Blanks and forged parts
- ▲ Spheroidal cast iron, grey cast iron

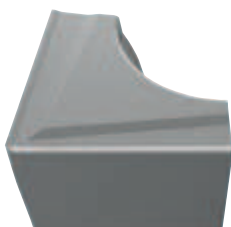
(.NMA)



- ▲ Universal machining
- ▲ Very stable
- ▲ For short chipping materials
- ▲ First choice for grey cast iron

Positive inserts

-SM



- ▲ Finishing to medium machining
- ▲ Universal application
- ▲ Unstable machining situations
- ▲ Good chip control
- ▲ Spheroidal cast iron, grey cast iron

