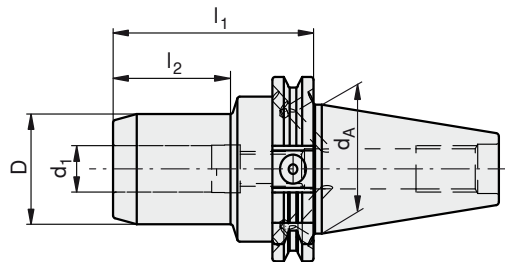


# DIN 69871

Hydraulic expansion chucks



Type, description	d <sub>1</sub> [mm]	l <sub>1</sub> [mm]	l <sub>2</sub> [mm]	d <sub>A</sub> [mm]	D [mm]
69871-ADB40-HD06-80	6	80	40	40	26
69871-ADB40-HD08-80	8	80	40	40	28
69871-ADB40-HD10-80	10	80	40	40	30
69871-ADB40-HD12-80	12	80	40	40	32
69871-ADB40-HD14-80	14	80	40	40	34
69871-ADB40-HD16-80	16	80	46	40	38
69871-ADB40-HD18-80	18	80	46	40	40
69871-ADB40-HD20-80	20	80	46	40	42
69871-ADB40-HD25-95	25	95	60	40	55
69871-ADB40-HD32-95	32	95	60	40	63
69871-ADB50-HD06-80	6	80	40	50	26
69871-ADB50-HD08-80	8	80	40	50	28
69871-ADB50-HD10-80	10	80	40	50	30
69871-ADB50-HD12-80	12	80	40	50	32
69871-ADB50-HD14-80	14	80	40	50	34
69871-ADB50-HD16-80	16	80	46	50	38
69871-ADB50-HD18-80	18	80	46	50	40
69871-ADB50-HD20-80	20	80	46	50	42
69871-ADB50-HD25-100	25	100	55	50	55
69871-ADB50-HD32-100	32	100	55	50	63

⚠ For tools with shank to DIN 1835 A+B and DIN 6535 HA+HB  
Shank to DIN 6535 HE in connection with reduction sleeves

