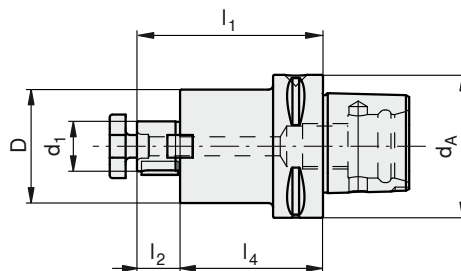
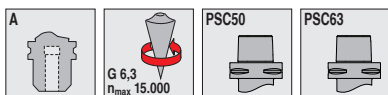


PSC

Combination shell mill adapters



Type, description	d ₁ [mm]	d _A [mm]	D [mm]	l ₁ [mm]	l ₂ [mm]	l ₄ [mm]	
PSC50-KA16-28	16	50	40	45	17	28	E01
PSC50-KA16-63	16	50	40	80	17	63	E01
PSC50-KA22-28	22	50	50	47	19	28	E02
PSC50-KA22-63	22	50	50	82	19	63	E02
PSC50-KA27-32	27	50	58	53	21	32	E03
PSC50-KA27-63	27	50	58	84	21	63	E03
PSC50-KA32-40	32	50	63	64	24	40	E04
PSC50-KA32-63	32	50	63	87	24	63	E04
PSC63-KA16-63	16	63	40	80	17	63	E01
PSC63-KA22-28	22	63	63	47	19	28	E02
PSC63-KA22-63	22	63	50	82	19	63	E02
PSC63-KA27-28	27	63	58	49	21	28	E03
PSC63-KA27-63	27	63	58	84	21	63	E03
PSC63-KA32-22	32	63	63	46	24	22	E04
PSC63-KA32-86	32	63	63	110	24	86	E04
PSC63-KA40-40	40	63	70	67	27	40	E05

E01	12087073	12087068	8395011300	8336701600	8336811600
E02	12087074	12087069	8395012400	8336702200	8336812200
E03	12087075	12087070	8395012500	8336702700	8336812700
E04	12087076	12087071	8395012600	8336703200	8336813200
E05	12087077	12087072	8395011200	8336704000	8336814000

