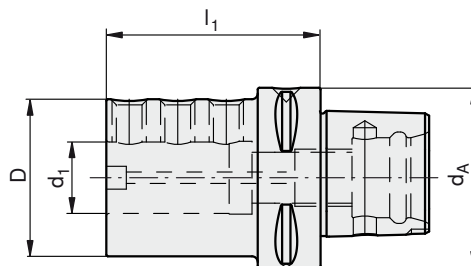
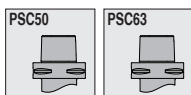


PSC

Boring bar holders



Type, description	d ₁ [mm]	l ₁ [mm]	d _A [mm]	D [mm]
PSC50-BH6-70	6	70	50	40
PSC50-BH8-70	8	70	50	44
PSC50-BH10-70	10	70	50	44
PSC50-BH12-70	12	70	50	44
PSC50-BH16-75	16	75	50	44
PSC50-BH20-75	20	75	50	50
PSC50-BH25-80	25	80	50	55
PSC50-BH32-90	32	90	50	72
PSC63-BH6-75	6	75	63	40
PSC63-BH8-80	6	80	63	40
PSC63-BH8-75	8	75	63	44
PSC63-BH8-85	8	85	63	45
PSC63-BH10-75	10	75	63	44
PSC63-BH10-85	10	85	63	50
PSC63-BH12-75	12	75	63	44
PSC63-BH12-100	12	100	63	63
PSC63-BH16-75	16	75	63	44
PSC63-BH16-100	16	100	63	63
PSC63-BH20-75	20	75	63	50
PSC63-BH20-100	20	100	63	68
PSC63-BH25-75	25	75	63	55
PSC63-BH25-100	25	100	63	68
PSC63-BH32-75	32	75	63	72
PSC63-BH32-100	32	100	63	72
PSC63-BH40-105	40	105	63	70

