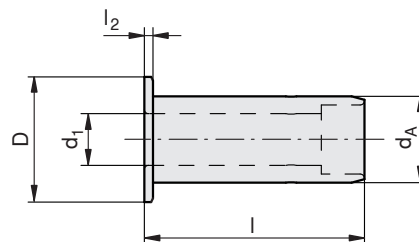
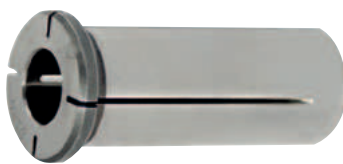


Reducers for hydraulic expansion chucks



Type, description	d ₁ [mm]	d _A [mm]	l [mm]	D [mm]	l ₂ [mm]
HD12-R03	3	12	44.5	19	2
HD12-R04	4	12	44.5	19	2
HD12-R05	5	12	44.5	19	2
HD12-R06	6	12	44.5	19	2
HD12-R08	8	12	44.5	19	2
HD20-R03	3	20	51	29	2
HD20-R04	4	20	51	29	2
HD20-R05	5	20	51	29	2
HD20-R06	6	20	51	29	2
HD20-R07	7	20	51	29	2
HD20-R08	8	20	51	29	2
HD20-R09	9	20	51	29	2
HD20-R10	10	20	51	29	2
HD20-R11	11	20	51	29	2
HD20-R12	12	20	51	29	2
HD20-R13	13	20	51	29	2
HD20-R14	14	20	51	29	2
HD20-R15	15	20	51	29	2
HD20-R16	16	20	51	29	2
HD32-R06	6	32	64	40	3
HD32-R08	8	32	64	40	3
HD32-R10	10	32	64	40	3
HD32-R12	12	32	64	40	3
HD32-R14	14	32	64	40	3
HD32-R16	16	32	64	40	3
HD32-R18	18	32	64	40	3
HD32-R20	20	32	64	40	3
HD32-R25	25	32	64	40	3