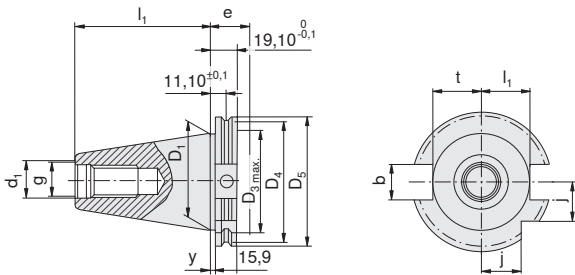
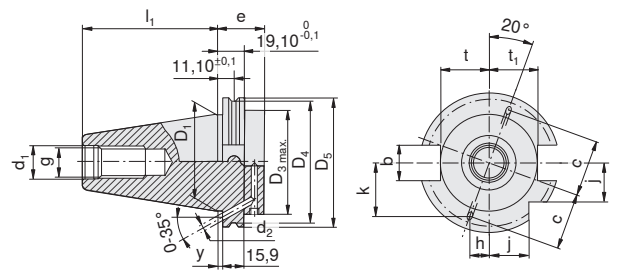


Technical data of ISO adapters (SK, HSK)

DIN 69871 form A

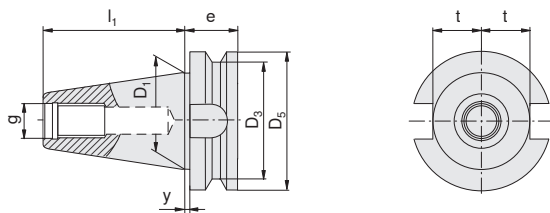


DIN 69871 form B



	D ₁	D _{3 max}	D ₄	D ₅	l ₁ ^{+0,2}	g	d ₁ ^{H7}	e	y ^{+0,1}	t	t ₁	j	d ₂	h	k	c	b
	[mm]	[mm]	[mm]	[mm]	[mm]		[mm]	[mm]	[mm]	[mm]	[mm]	[mm]	[mm]	[mm]	[mm]	[mm]	[mm]
SK 40	44,45	50	56,25	63,55	68,4	M 16	17	35	3,2	22,8	25	18,5	4	9,2	25,4	27	16,1
SK 50	69,85	80	91,25	97,5	101,75	M 24	25	35	3,2	35,5	37,7	30	6	14,4	39,5	42	25,7

MAS-BT

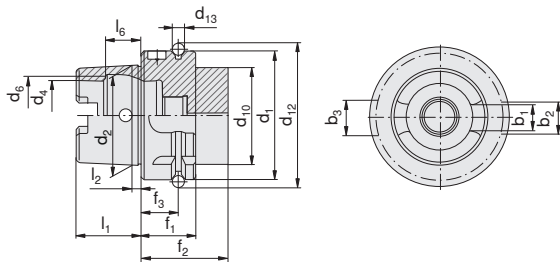


	D ₁	D ₃	D ₅	l ₁	g	e	t	y	b
	[mm]	[mm]	[mm]	[mm]		[mm]	[mm]	[mm]	[mm]
BT 40	44,45	53	63	65,4	M 16	27	22,5	2	16,1
BT 50	69,85	85	100	101,8	M 24	38	35,3	3,2	25,7

HSK DIN 69893 A+C

Recommended parameters for HSK-A adapters

HSK-A 63 up to 25,000 min⁻¹
 HSK-A 100 up to 16,000 min⁻¹



	b ₁	b ₂	b ₃	d ₁	d ₂	d ₄	d ₆	d ₁₀	d ₁₂	f ₁	f ₂	b ₁	f ₃	l ₁	l ₂	l ₆
	[mm]	[mm]	[mm]	[mm]	[mm]	[mm]	[mm]	[mm]	[mm]	[mm]	[mm]	[mm]	[mm]	[mm]	[mm]	[mm]
HSK 63	12,54	16	18	63	48	34	37	53	72,3	7	26	42	18	32	6,3	18,13
HSK 100	20,02	20	22	100	75	53	58	88	109,75	7	29	45	20	50	10	28,56