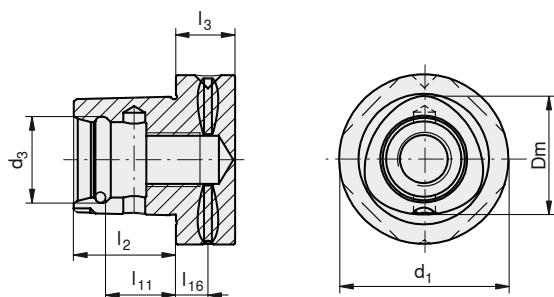


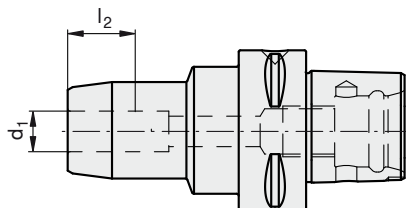
Technical data for PSC / hydraulic expansion chucks

PSC



	d ₁ [mm]	d ₃ [mm]	l ₂ [mm]	l ₃ [mm]	l ₁₁ [mm]	l ₁₆ [mm]	D _m [mm]
PSC 50	50	24	30	20	22	12	35
PSC 63	63	32	38	22	26	12	44

Hydraulic expansion chuck



d ₁ h6 [mm]	Max. rev number [min ⁻¹]	Max. torque moment [Nm]	Min. clamping depth l ₂ [mm]	Max. adjustment [mm]	Optimal operating temperature [°C]	Max. coolant pressure [bar]
6	40 000	20	28	10	20 - 50	80
8	40 000	30	28	10	20 - 50	80
10	40 000	50	33	10	20 - 50	80
12	40 000	85	28	10	20 - 50	80
14	40 000	110	38	10	20 - 50	80
16	40 000	180	41	10	20 - 50	80
18	40 000	240	41	10	20 - 50	80
20	40 000	310	43	10	20 - 50	80
25	40 000	420	49	10	20 - 50	80
32	40 000	650	53	10	20 - 50	80