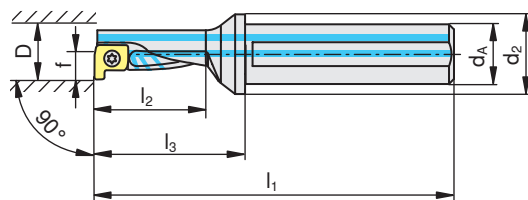
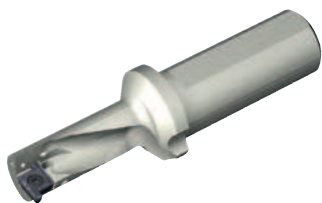
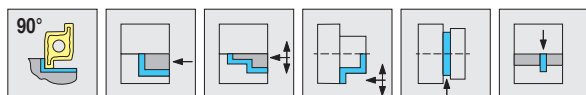


ProfileMaster

90° / 2.25D



D _{min} [mm]	Type, description	LNR 										
			d _A [mm]	d ₂ [mm]	l ₁ [mm]	l ₂ [mm]	l ₃ [mm]	f [mm]	[Nm]			
10	PMC 10R-2.25D	R	12	18	72.4	22.5	30.4	5	0.4	PM 10..	E01	
10	PMC 10L-2.25D	L	12	18	72.4	22.5	30.4	5	0.4	PM 10..	E01	
12	PMC 12R-2.25D	R	16	22	78	27	33.0	6	1.0	PM 12..	E02	
12	PMC 12L-2.25D	L	16	22	78	27	33.0	6	1.0	PM 12..	E02	
16	PMC 16R-2.25D	R	20	28	96.5	36	46.5	8	2.2	PM 16..	E03	
16	PMC 16L-2.25D	L	20	28	96.5	36	46.5	8	2.2	PM 16..	E03	
20	PMC 20R-2.25D	R	25	35	111	45	55.0	10	3.2	PM 20..	E04	
20	PMC 20L-2.25D	L	25	35	111	45	55.0	10	3.2	PM 20..	E04	
25	PMC 25R-2.25D	R	32	44	132.6	56.3	72.6	12.5	3.2	PM 25..	E05	
25	PMC 25L-2.25D	L	32	44	132.6	56.3	72.6	12.5	3.2	PM 25..	E05	
32	PMC 32R-2.25D	R	40	54	158	72	88.0	16	5.0	PM 32..	E06	
32	PMC 32L-2.25D	L	40	54	158	72	88.0	16	5.0	PM 32..	E06	

E01	11807484		11843205
E02	11450028		11488748
E03	12052220		11843208
E04	12052231	8095012000	
E05	11610311	8095012000	
E06	12052233	8095012100	

