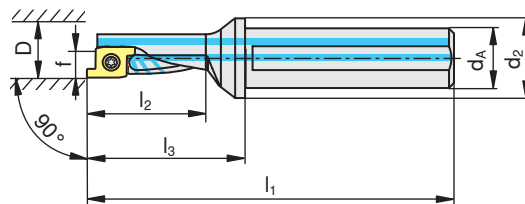
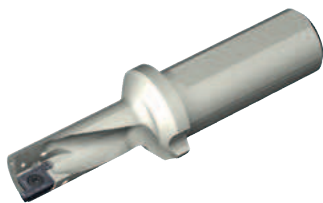
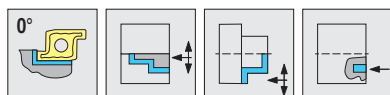


ProfileMaster

0° / 2.25D



D _{min} [mm]	Type, description	LNR 										
			d _A [mm]	d ₂ [mm]	l ₁ [mm]	l ₂ [mm]	l ₃ [mm]	f [mm]	[Nm]			
16	PMC 16R-2.25D	R	20	28	98.7	38.2	48.7	5.75	2.2	PM 16..	E01	
16	PMC 16L-2.25D	L	20	28	98.7	38.2	48.7	5.75	2.2	PM 16..	E01	
20	PMC 20R-2.25D	R	25	35	113.7	47.7	57.7	7.30	3.2	PM 20..	E02	
20	PMC 20L-2.25D	L	25	35	113.7	47.7	57.7	7.30	3.2	PM 20..	E02	
25	PMC 25R-2.25D	R	32	44	135.8	59.5	75.8	9.30	3.2	PM 25..	E03	
25	PMC 25L-2.25D	L	32	44	135.8	59.5	75.8	9.30	3.2	PM 25..	E03	
32	PMC 32R-2.25D	R	40	54	162.2	76.2	92.2	11.85	5.0	PM 32..	E04	
32	PMC 32L-2.25D	L	40	54	162.2	76.2	92.2	11.85	5.0	PM 32..	E04	

E01	12052220			11843208
E02	12052231		8095012000	
E03	11610311		8095012000	
E04	12052233		8095012100	

