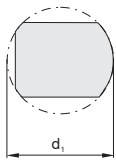


2

Shank diameter

d ₁ mm	d ₁ inch
08	A double-digit number which shows the boring bar diameter in 1/16 inch.
10	
12	
16	
20	
25	
32	
40	
50	
60	

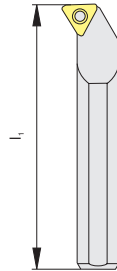


3

Tool length

l ₁ mm	l ₁ inch	
80	3	F
100	3,5	H
110	4	J
125	4,5	K
140	5	L
150	5,5	M
160	6	N
170	6,5	P
180	6,75	Q
200	7	R
250	8	S
300	10	T
350	12	U
400	14	V
450	16	W
500	18	Y

Special X



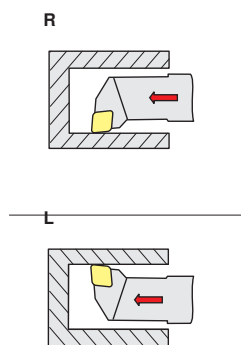
4

Clamping method

<p>D</p> <p>Retained from above and via bore</p>	<p>S</p> <p>Retained via centre screw</p>
<p>M</p> <p>Retained from above and via bore</p>	<p>P</p> <p>Retained via the bore</p>
<p>C</p> <p>Retained from above</p>	<p>X Special version</p>

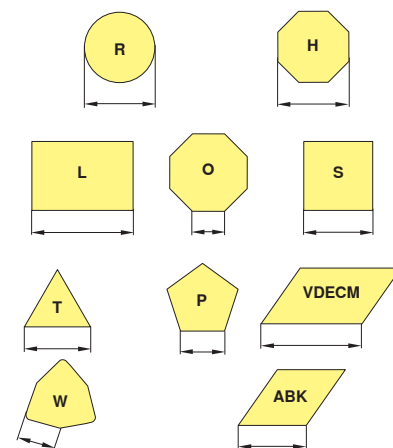
8

Cutting direction



9

Cutting edge length



10

Manufacturer specification

T = lever
 Special length (mm)
 Insert thickness (other than standard)
 Special version (X..)
 Machine manufacturer (specific)